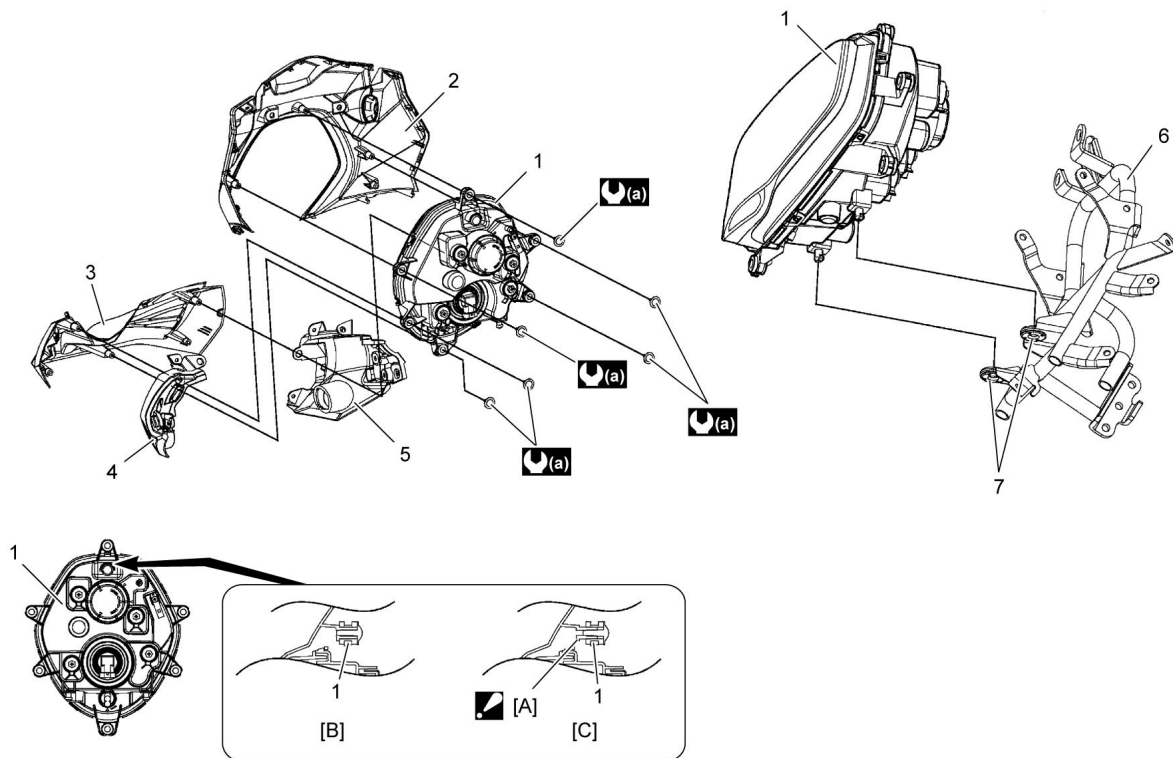




9B



Headlight Construction



 [A]:	Install the headlight assembly so that there is no clearance.	2.	Body cowling	6.	Cowling brace
[B]:	Correct	3.	Lower body cowling	7.	Cushion
[C]:	Incorrect	4.	Left front side cover	 (a):	2 N·m (0.2 kgf-m, 1.5 lbf-ft)
1.	Headlight assembly	5.	Right front side cover		